

 **ANCHOR**

by **Panasonic**

MODULAR BOXES

CONCEALED GI & PLASTIC BOXES SURFACE PLASTIC BOXES



ROMA
Classic



ROMA
PLUS



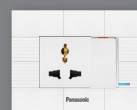
ROMA
URBAN



WOODS



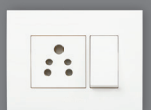
Rider



Panasonic
VISION



Panasonic
EUROPA



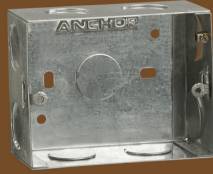
PENTA
MODULAR

PRICELIST: JUNE 2021

Concealed Galvanised Metal Boxes

METAL BOXES

- GI Boxes with 120 GSM Zinc Coating
- Manufactured from GI Sheet having 250 Hrs protection against Red rust
- Good quality threads
- Earthing terminal to avoid shock



Concealed & Surface Plastic Boxes

PLASTIC BOXES

- High quality boxes made with High impact plastics
- Metal thread inserts



Code	Description	Dimensions (L x W x D) in cm	HSN	MRP ₹ Per N (incl. of all taxes)	Standard Packing Quantity
CONCEALED GI SHEET METAL BOXES					
21780	1 or 2 Module	7.9 x 7.5 x 4.6	85389000	59.00	10N
21452	3 Module	7.9 x 9.9 x 4.6	85389000	82.00	10N
21791	4 Module	7.9 x 13.5 x 5.2	85389000	99.00	10N
21463	6 Module	7.9 x 20.7 x 5.2	85389000	127.00	10N
30453	8 or 9 Module Horizontal	7.9 x 23.0 x 5.2	85389000	163.00	5N
21474	8 Module Rectangular	13.2 x 13.5 x 5.6	85389000	163.00	5N
21485	12 Module	13.2 x 20.7 x 5.6	85389000	201.00	5N
21736	16 Module	14.2 x 23.0 x 5.6	85389000	218.00	5N
21758	18 Module	20.7 x 20.7 x 6.0	85389000	241.00	5N

CONCEALED GI SHEET METAL BOXES - 1.2 mm Thickness					
35640	1 or 2 Module	7.9 x 7.5 x 4.6	85389000	70.00	10N
35650	3 Module	7.9 x 9.9 x 4.6	85389000	103.00	10N
35661	4 Module	7.9 x 13.5 x 5.2	85389000	124.00	10N
35672	6 Module	7.9 x 20.7 x 5.2	85389000	155.00	10N
35683	8 or 9 Module Horizontal	7.9 x 23.0 x 5.2	85389000	205.00	5N
35394	8 Module Rectangular	13.2 x 13.5 x 5.6	85389000	205.00	5N
35708	12 Module	13.2 x 20.7 x 5.6	85389000	251.00	5N
35719	16 Module	14.2 x 23.0 x 5.6	85389000	270.00	5N
35720	18 Module	20.7 x 20.7 x 6.0	85389000	298.00	5N

CONCEALED GI SHEET METAL BOXES - 1.6 mm Thickness					
35785	1 or 2 Module	8.0 x 7.6 x 5.5	85389000	102.00	10N
35796	3 Module	8.0 x 10.1 x 5.5	85389000	128.00	10N
35800	4 Module	8.0 x 13.6 x 5.5	85389000	160.00	10N
35810	6 Module	8.0 x 20.9 x 5.5	85389000	205.00	10N
35832	8 or 9 Module Horizontal	8.0 x 23.0 x 5.5	85389000	252.00	5N
35821	8 Module Rectangular	13.3 x 13.5 x 6.0	85389000	252.00	5N
35843	12 Module	13.3 x 20.9 x 6.0	85389000	310.00	5N
35854	16 Module	14.6 x 23.0 x 6.0	85389000	345.00	5N
35865	18 Module	20.4 x 20.9 x 6.0	85389000	400.00	5N

* Limited time, as per site condition

Code	Description	Dimensions (L x W x D) in cm	HSN	MRP ₹ Per N (incl. of all taxes)	Standard Packing Quantity
STAINLESS STEEL METAL BOXES					
36001	1 or 2 Module	7.9 x 7.5 x 4.6	85389000	302.00	10N
36002	3 Module	7.9 x 9.9 x 4.6	85389000	357.00	10N
36003	4 Module	7.9 x 13.5 x 5.2	85389000	469.00	10N
36004	6 Module	7.9 x 20.7 x 5.2	85389000	585.00	10N
36005	8 or 9 Module Horizontal	7.9 x 23.0 x 5.2	85389000	694.00	5N
36006	8 Module Rectangular	13.2 x 13.5 x 5.6	85389000	694.00	5N
36007	12 Module	13.2 x 20.7 x 5.6	85389000	856.00	5N
36008	16 Module	14.2 x 23.0 x 5.6	85389000	978.00	5N
36009	18 Module	20.7 x 20.7 x 6.0	85389000	1181.00	5N

SURFACE PLASTIC BOXES					
21281	1 or 2 Module	8.5 x 8.5 x 5.0	85389000	59.00	10N
20449	3 Module	8.5 x 11.5 x 5.0	85389000	72.00	10N
21292	4 Module	8.5 x 14.5 x 5.0	85389000	79.00	10N
30511	6 Module	8.5 x 21.9 x 5.0	85389000	104.00	10N
30704	8 or 9 Module Horizontal	8.5 x 24.8 x 5.0	85389000	143.00	5N
20450	8 Module Rectangular	15.2 x 14.5 x 5.0	85389000	143.00	5N
20347	12 Module	15.3 x 21.4 x 5.0	85389000	181.00	5N
34567*	16 Module	15.3 x 25.9 x 5.0	85389000	194.00	5N
34568	16 Module	23.0 x 15.3 x 5.0	85389000	212.00	5N
34569**	18 Module	21.4 x 20.5 x 5.0	85389000	237.00	5N

* Not suitable for Woods - (Matrix, Stella Plate), Vision & Roma Plates

CONCEALED PLASTIC BOXES					
21237	1 or 2 Module	7.8 x 7.8 x 4.5	85389000	45.00	10N
21306	3 Module	7.5 x 10.3 x 5.2	85389000	54.00	10N
21248	4 Module	7.6 x 13.6 x 4.6	85389000	70.00	10N
21259	6 Module	7.6 x 20.5 x 5.0	85389000	103.00	10N
30475	8 or 9 Module Horizontal	7.8 x 22.9 x 5.0	85389000	133.00	5N
21260	8 Module Rectangular	13.5 x 13.3 x 5.1	85389000	133.00	5N
21270	12 Module	13.5 x 20.6 x 5.1	85389000	165.00	5N
21408	18 Module	20.4 x 20.7 x 5.1	85389000	209.00	5N

* S.S. box also available on request

TERMS AND CONDITIONS

- 1) Prices are in Indian ₹. 2) All prices are subject to the general terms and conditions of our business. 3) Prices are subject to change without prior notice. 4) This price list supersedes all our previous price lists. 5) If any dispute should arise it will be subject to Thane jurisdiction. 6) Company reserves the right to issue amendments which may arise due to any errors in the price list.
- 7) Colour in images are for reference purpose only, please see product for actual colour.

Due to continuous improvements in product design and development and manufacturing methods, the product may differ in some aspects from the details provided herein.

PANASONIC LIFE SOLUTIONS INDIA PVT. LTD.

Corporate & Head Office: 3rd Floor, B Wing, I-Think Techno Campus, Pokharan Road No.2, Thane (W), Thane - 400 607, Maharashtra.
Tel. 022 4222 8888 | Fax. 022 4222 8884, Customer Care no.: 022-41304130 | WhatsApp: 9136028606
Email: wecare@in.panasonic.com | www.lsin.panasonic.com

Registered Office: 12th Floor, Ambience Tower, Ambience Island, NH-48, Gurugram - 122 002, Haryana.

www.facebook.com/AnchorPanasonic
www.twitter.com/AnchorPanasonic
<https://in.linkedin.com/company/anchor-panasonic>
www.instagram.com/anchorpanasonic/

Distributor / Dealer Stamp